

Curvature Systems

CURVATURE WEDGE

Curvature



Ramp Curvature Wedge is a high quality, very compact stage monitor that combines the maximum volume of the speaker with an optimum angle in a very low profile design.

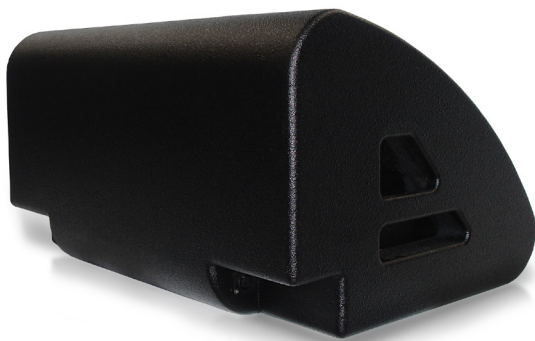
It incorporates a low frequency unit of 12" (300mm) and a motor of compression of 1.4" (35mm) of exit coupled to a conical diffuser of 60°.

When working in active mode the Curvature Wedge should be used with an appropriate processor that gives you crossover, limiter and equalization functions. In passive mode the Curvature Wedge can be used without processor.

In both active and passive modes, a very good linearity and a high performance is maintained for use on the stage.

FEATURES

- Very high performance monitor
- High-excursion 12" (300mm) neodymium speaker that supports high power
- 1.4" (35mm) neodymium tweeter compression motor with titanium diaphragm
- Acoustic diffuser with a conical dispersion of 60°
- Modern birch plywood design
- Operation of active / passive crossover via external switch
- Frequency response 65Hz - 19kHz - +/- 3dB, -10dB @ 52Hz
- Discrete Connectors
- Available in left and right versions
- Compact and versatile to cover areas near or far from the stage.
- Suitable for average powers of F.O.H. And frontfill and sidefill applications



APPLICATIONS

Stage monitors
Sound reinforcement in theaters
Frontfill and Sidefill
Fixed installations
Concert halls

AUDIO SPECIFICATIONS

Frequency Response	65 Hz – 19 KHz
Power Handling	LF 500w RMS 1000w Peak HF 80w RMS 150w Peak
SPL Maximum Output	129 dB
Sensitivity (1w/1m)	LF 99 dB HF 109 dB
Dispersion	60° Cónica
Nominal Impedance	LF 8 Ohm HF 16Ohm
Drivers	LF 12” HF 1,5” Compression Driver
Loudspeaker Type	1,2 KHz
Input Connection	2 x Speakon NL4 2 x XLR Passive

MECHANICAL SPECIFICATIONS

Height	341mm
Width	640mm
Depth	451mm
Weight	28kg
Finish	Black Epoxy
Shell	15mm Baltic Birch